

ATHLOS™ SR1200 carbon nanostructures

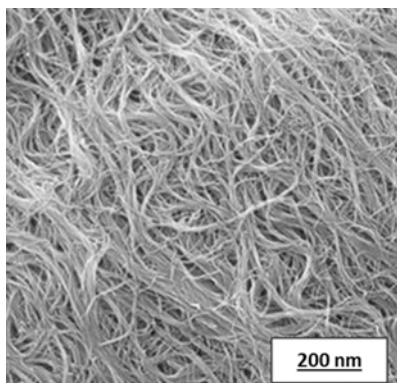


PRODUCT HIGHLIGHTS

Our ATHLOS carbon nanostructures (CNS) are a family of highly conductive, coated, branched, and crosslinked carbon nanotube structures.

ATHLOS CNS products have a unique morphology consisting of interlinked nanostructures that differentiate this product line from traditional carbon nanomaterials by delivering a combination of:

- ◆ Enhanced conductivity at lower loadings
- ◆ High EMI shielding effectiveness
- ◆ Increased tensile and tear strength
- ◆ Enhanced handling for easier processing



APPLICATIONS IN ELASTOMERS

ATHLOS SR1200 CNS are suitable for use in conductive rubber applications requiring an optimal balance of high electrical conductivity, good processability and enhanced physical properties.

ATHLOS SR1200 CNS allow flexibility in compounding to balance hardness/stiffness/viscosity and conductivity.

ATHLOS SR1200 CNS can be used in all type of rubbers, including high-end polymers such as fluoroelastomer (FKM) and hydrogenated nitrile (HNBR), to provide conductivity while allowing good processability.

TYPICAL PROPERTIES		
Property	Value	Test Method
Pellet Size	~5 mm (L) x 1 mm (D)	CTM*
Bulk Density	0.135 g/cm ³	ASTM D7481
Surface Area	200 m ² /g	ASTM D6556
% Carbon	>97%	CTM*
Post Coating	<1% in proprietary mixtures	CTM*

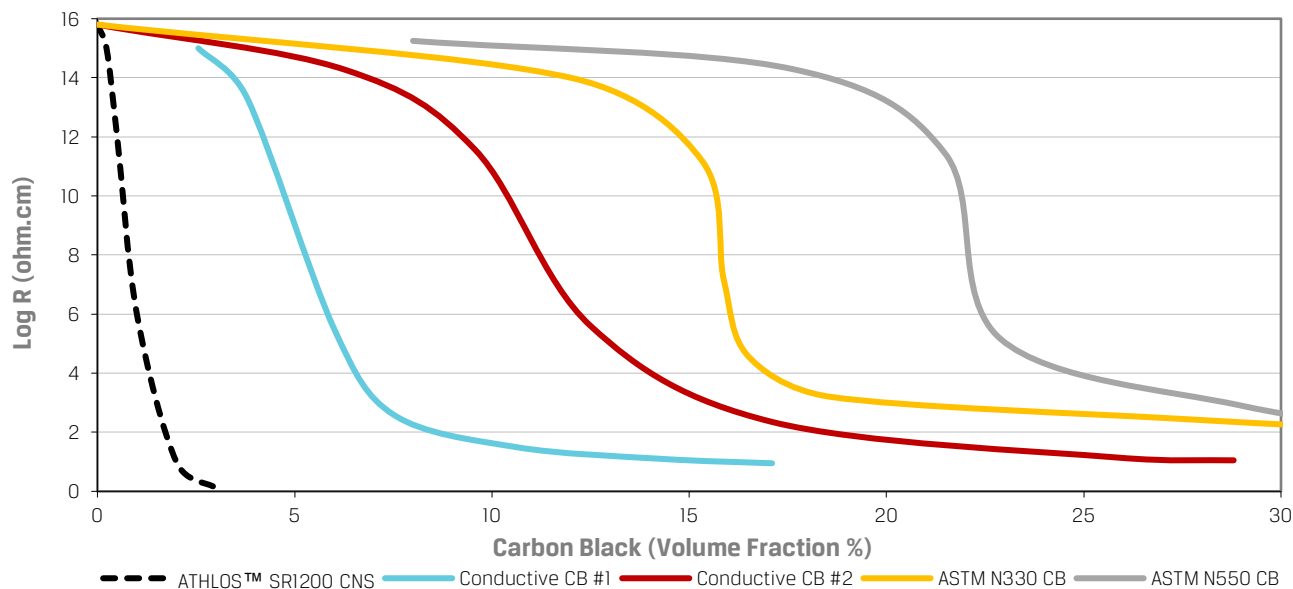
*Tests are performed using Cabot Test Methods, and the percentiles are based on weight.

The data in the table and charts in this document are typical test values intended as guidance only, and they are not product specifications. Product specifications are available upon request from your Cabot representative.

ATHLOS™ SR1200 carbon nanostructures

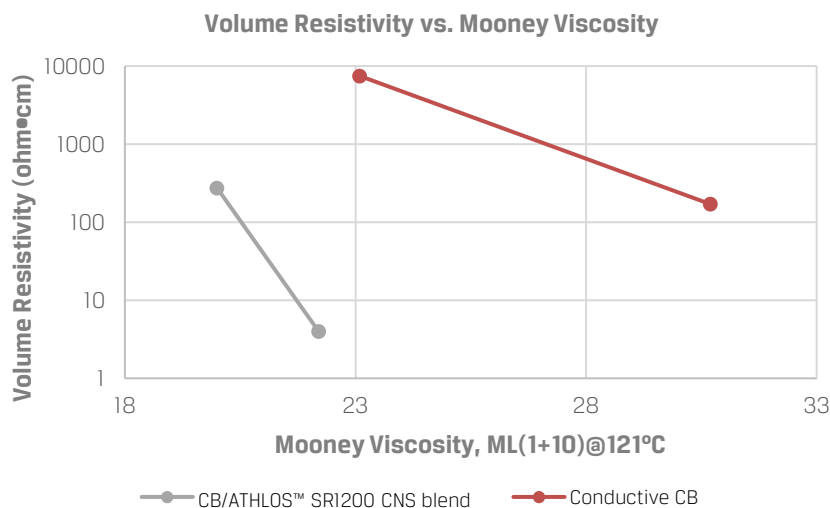
CONDUCTIVE PERFORMANCE

The following figure shows the percolation curve of ATHLOS SR1200 CNS versus other conductive and superconductive carbon blacks (CB).



PROCESSABILITY IMPROVEMENT

ATHLOS SR1200 CNS improve the conductivity/viscosity tradeoff versus conventional conductive CB.



PRODUCT FORM AND LOGISTICS

- ◆ Product form: Pellets
- ◆ Regional availability: Global
- ◆ Packaging options: 5 kg boxes

For information on product-specific storage conditions, please refer to the applicable Safety Data Sheet (SDS) available from your Cabot representative at cabotcorp.com/contact.

This information is provided as a convenience and for informational purposes only. No guarantee or warranty as to this information, or any product to which it relates, is given or implied. Cabot disclaims all warranties express or implied, including intellectual property infringement, merchantability or fitness for a particular purpose as to (i) such information, or (ii) any product. In no event is Cabot responsible for, and Cabot does not accept and hereby disclaims liability for, any damages whatsoever in connection with the use of or reliance on this information or any product to which it relates.